



PROJECT FACT SHEET

Marine Stadium Jetty and Pontoon

The Gold Coast Waterways Authority is improving transport access to the top of The Spit. A pontoon and jetty will be constructed in Marine Stadium for use by ferries, recreational, commercial and emergency vessels. This will provide visitors with an alternative to land-based transport to The Spit.

Benefits:

This project is being undertaken as part of the Queensland Government's implementation of the Master Plan for The Spit. It will deliver the following community benefits:

- Improving transport access to The Spit by creating alternatives to land-based transport, particularly for people attending events in Doug Jennings Park.
- The pontoon will create a safe, accessible embarkation point suitable for recreational and commercial vessels, including ferries, at the northern end of Marine Stadium.
- The pontoon will also serve as an alternative evacuation point in the event of emergencies.
- A 100m long jetty into Marine Stadium. The jetty will create a unique vantage point looking south over the Broadwater to Surfers Paradise which will become a destination and attract more people to the area.
- The jetty will create opportunities for fishing, recreation and relaxing.
- The project is consistent with community feedback on the Spit Master Plan and the types of facilities the community wants to see at The Spit – for more information go to <https://gcwa.qld.gov.au/spit-master-plan/>

PROJECT LOCATION

Marine Stadium – Seaworld Drive,
Gold Coast, Queensland

KEY DETAILS

Planned Investment:
\$4.04million

Estimated Construction Start:
July 2021

Estimated Construction Completion:
December 2021

Current Status:
Detailed Design Phase

CONTACT

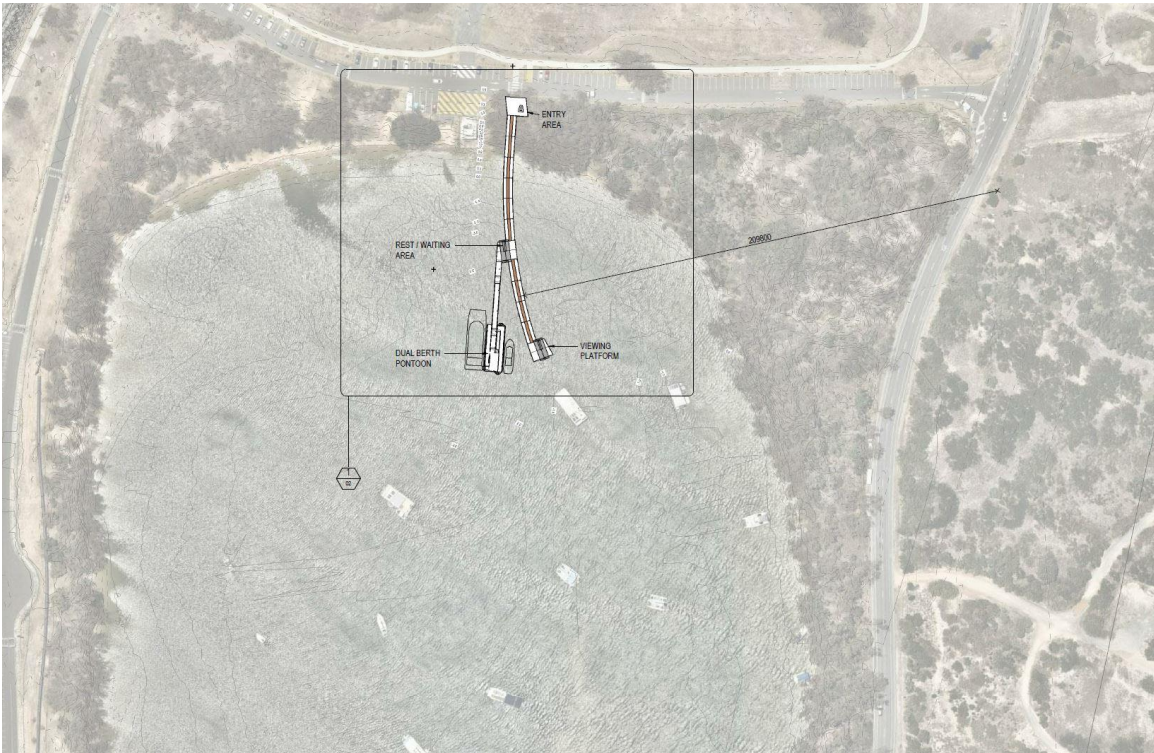
Gold Coast Waterways Authority

07 5539 7378 or
mail@gcwa.qld.gov.au

Impacts:

- During construction there will be an exclusion zone around the works area where access will be prohibited – information about the exclusion zone will be updated closer to the start of construction
- There will be some noise as a result of construction activities such as pile-driving
- Following construction, vessels will not be able to anchor with 30m of the structure.

Project site area



Project site area



Artist's Impression of Jetty and Pontoon