



PROJECT FACT SHEET

Marine Stadium Jetty and Pontoon

The Gold Coast Waterways Authority is improving transport access to the top of The Spit. A pontoon will be constructed in Marine Stadium for use by passenger ferries, recreational, commercial, and emergency vessels. The jetty will provide a unique leisure experience with views over the Broadwater to the Surfers Paradise skyline. This project is part of The Spit Master Plan Implementation.

Benefits:

This project will create world-class facilities for Gold Coast locals and visitors to enjoy by:

- Creating a safe and accessible embarkation point suitable for recreational and commercial vessels, including ferries, at the northern end of Marine Stadium.
- Offering alternatives to land-based transport, particularly for people attending events in Doug Jennings Park.
- Providing a 100m long jetty into Marine Stadium, creating a unique vantage point looking south over the Broadwater to Surfers Paradise.
- Generating new opportunities for fishing, recreation, and relaxation.
- Establishing an alternative evacuation point in the event of emergencies.

This project is a part of the shared vision for the long-term future of The Spit and supports our commitment to improving the area as a community asset for future generations – for more information go to <https://gcwa.qld.gov.au/spit-master-plan/>

PROJECT LOCATION

Marine Stadium – Seaworld Drive,
Gold Coast, Queensland

KEY DETAILS

Planned Investment:

\$4.04 million

Estimated Construction Start:

August 2021

Estimated Construction Completion:

February 2022

Current Status:

Concept Design Phase

CONTACT

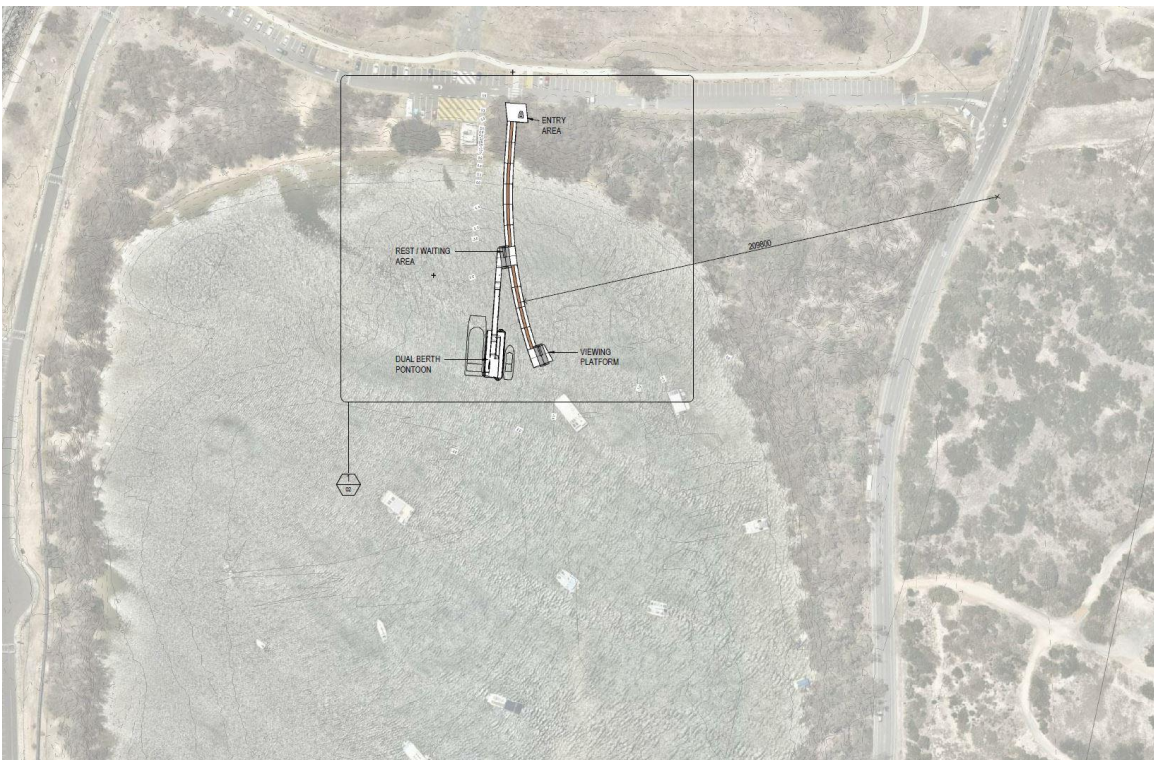
Gold Coast Waterways Authority

07 5539 7378 or
spitmasterplan@gcwa.qld.gov.au

Impacts:

- For safety reasons, an exclusion zone will be put in place around the works area during the construction phase prohibiting public access prohibited. Information about the exclusion zone will be updated before construction starts.
- There will be some noise because of construction activities such as pile-driving.
- Following construction, vessels will not be able to anchor within 30m of the structure.

Project site area:



Project site area



Concept images of Jetty and Pontoon