



COOMERA ISLAND

COOMERA RIVER

SOVEREIGN ISLANDS

THE BROADWATER

PARADISE POINT

NOT FOR NAVIGATION

NOTES:

- Contours are computer generated to hydrographic standard (inclusive).
- Sounding obtained from aerial photography is approximate only.
- Horizontal position is classified as 'D'. Data provided by GDA and HD.
- Hydrographic surveys up to 20/7/2016.
- Data trimmed above elevation 14 LAT.

Horizontal Datum	MGA Zone 58 (GDA04)	Reading	Heading
Vertical Datum	LAT based on		
Depth Unit	N/A	Horizontal Accuracy	N/A
Weather	N/A		

Soundings	2s below datum	CLASS	N/A
Horizontal Positioning	D	CLIENT	GCWA
Vertical Accuracy	±0.1m		
Horizontal Accuracy	±0.1m		
Vertical Accuracy	±0.1m		
Horizontal Accuracy	±0.1m		
Vertical Accuracy	±0.1m		

Scale	1:2000 AT A1
Scale	1:2000 AT A1
Scale	1:2000 AT A1

Queensland Government
HYDROGRAPHIC SERVICES
 1487/18 +1070

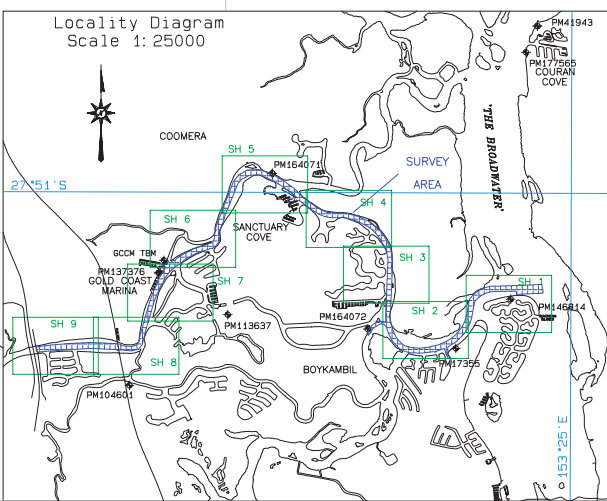
COOMERA RIVER
SOVEREIGN ISLAND TO PACIFIC HIGHWAY
 COMPILED HYDROGRAPHIC DATA
 AUGUST 2016

Plot No. B3000BOP1.PDF
 Job No. GC140051
 Plan No. **B300-080**
 SHEET 1 OF 9

SURVEY CONTROL - MGA Zone 58 (GDA04)						
SURVEY MARK	EASTING	NORTHING	ELLIPSOIDAL	LAT SEPARATION	LAT	COMMENTS
PM 164071	535425.567	6919718.832	42.308			Tallwood Drive Boat Ramp
Drill Hole (Boyakambil Boat Ramp)	537218.268	6918770.336		39.830	2.004	Boyakambil Boat Ramp
PM 177565	540172.113	6921988.096	41.834			Couran Cove
PM 151012	529179.440	6914963.911	41.750		5.640	Brygon Creek, Coomera River
PM 17355	538960.709	6916446.468	41.734		1.930	Paradise Point, Coomera River
PM 104601	532750.097	6915754.341	46.908		7.121	Saltwater Creek
PM 41943	540389.385	6922478.230	41.589		1.720	Couran Point
PM 113637	534591.427	6917076.706		39.824	3.204	Sanctuary Cove round about
PM 137376	532982.717	6917860.028				Gold Coast City Council Marina
PM 164072	537213.042	6916607.564	41.587			Boyakambil Boat Ramp
PM 146814	539989	6917360			3.721	Sovereign Island
GCCM TBM	533397.10	6918067.59	42.59			Boat In Copper Log Fence, HZ & VZ: RTK GPS (28/8/14)

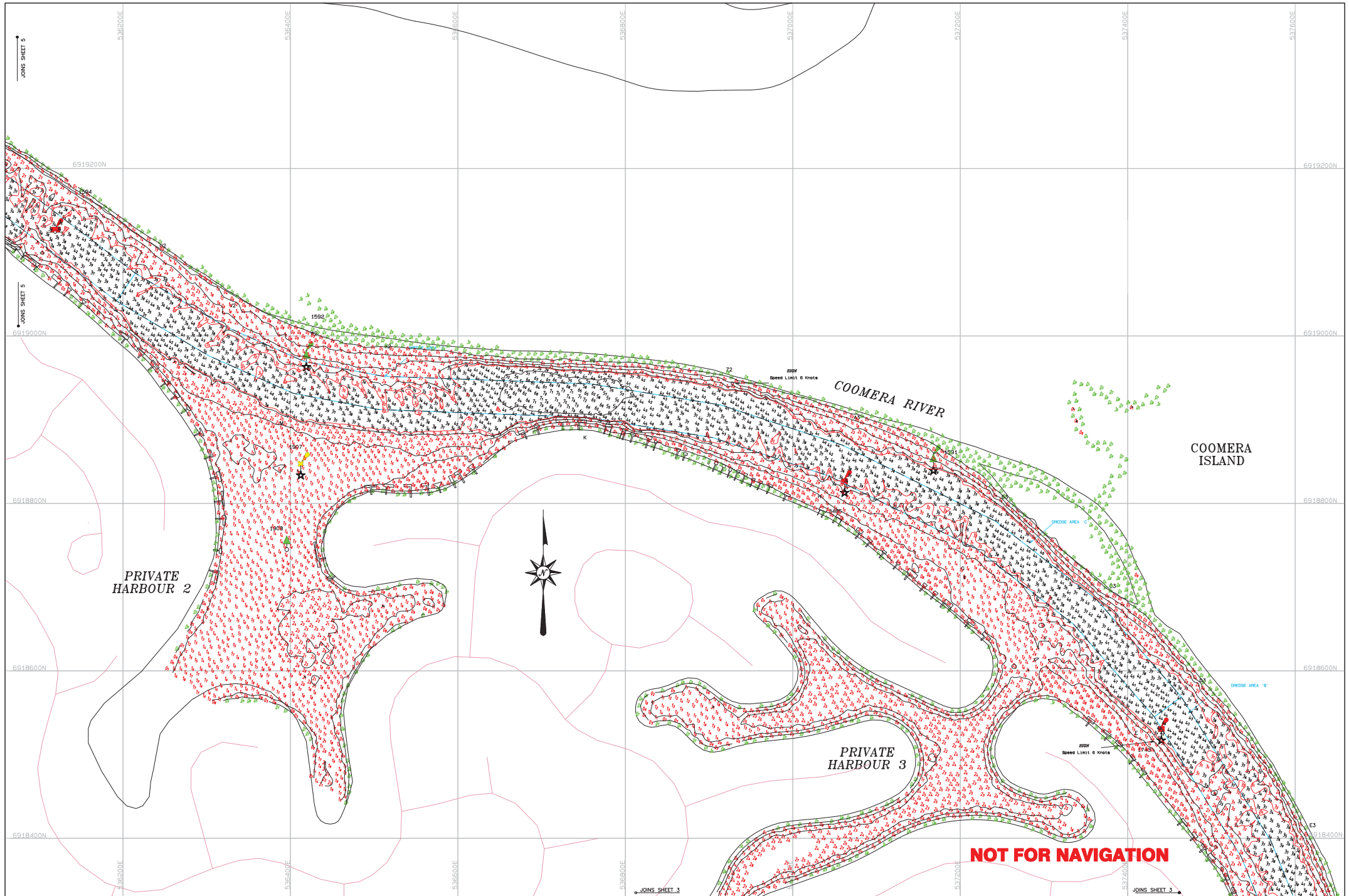
CHANNEL LIMITS - MGA Zone 58 (GDA04)		
POINT	EASTING	NORTHING
A6	535462.90	6916457.11
B6	538566.76	6916485.09
C6	538566.76	6916485.09
D6	538748.49	6916573.65
E6	538929.02	6916625.22
F6	538960.35	6916692.41
G6	538969.43	6916735.51
H6	539019.57	6916846.50
I6	539059.14	6916925.41
J6	539090.29	6917022.22
K6	539129.14	6917123.39
L6	539142.15	6917323.28
M6	539166.81	6917374.09
N6	539225.78	6917434.31
O6	539206.46	6917496.54
P6	539401.66	6917542.31
Q6	539202.02	6917466.34
R6	539604.39	6917574.95
S6	540104.78	6917586.55
V6	540354.05	6917600.53
W6	534508.83	6918233.59
X6	534422.33	6918843.99
Y6	534411.23	6919464.56
Z6	534350.79	6918351.22
A7	534196.20	6918310.52
B7	533796.56	6918233.39
C7	533729.56	6918103.69
D7	533479.36	6917891.66
E7	533307.06	6917718.89
F7	533270.30	6917512.85
G7	533194.68	6917316.41
H7	533029.39	6916751.30
I7	532912.06	6916452.84
J7	532789.71	6916412.65
K7	532789.71	6916412.65
L7	532786.07	6916452.84
M7	532748.98	6916473.76
N7	532748.98	6916452.84
O7	532786.07	6916452.84
P7	532786.07	6916452.84
Q7	532786.07	6916452.84
R7	532786.07	6916452.84
S7	532786.07	6916452.84
T7	532786.07	6916452.84
U7	532786.07	6916452.84
V7	532786.07	6916452.84
W7	532786.07	6916452.84
X7	532786.07	6916452.84
Y7	532786.07	6916452.84
Z7	532786.07	6916452.84
A8	532786.07	6916452.84
B8	532786.07	6916452.84
C8	532786.07	6916452.84
D8	532786.07	6916452.84
E8	532786.07	6916452.84
F8	532786.07	6916452.84
G8	532786.07	6916452.84
H8	532786.07	6916452.84
I8	532786.07	6916452.84
J8	532786.07	6916452.84
K8	532786.07	6916452.84
L8	532786.07	6916452.84
M8	532786.07	6916452.84
N8	532786.07	6916452.84
O8	532786.07	6916452.84
P8	532786.07	6916452.84
Q8	532786.07	6916452.84
R8	532786.07	6916452.84
S8	532786.07	6916452.84
T8	532786.07	6916452.84
U8	532786.07	6916452.84
V8	532786.07	6916452.84
W8	532786.07	6916452.84
X8	532786.07	6916452.84
Y8	532786.07	6916452.84
Z8	532786.07	6916452.84
A9	532786.07	6916452.84
B9	532786.07	6916452.84
C9	532786.07	6916452.84
D9	532786.07	6916452.84
E9	532786.07	6916452.84
F9	532786.07	6916452.84
G9	532786.07	6916452.84
H9	532786.07	6916452.84
I9	532786.07	6916452.84
J9	532786.07	6916452.84
K9	532786.07	6916452.84
L9	532786.07	6916452.84
M9	532786.07	6916452.84
N9	532786.07	6916452.84
O9	532786.07	6916452.84
P9	532786.07	6916452.84
Q9	532786.07	6916452.84
R9	532786.07	6916452.84
S9	532786.07	6916452.84
T9	532786.07	6916452.84
U9	532786.07	6916452.84
V9	532786.07	6916452.84
W9	532786.07	6916452.84
X9	532786.07	6916452.84
Y9	532786.07	6916452.84
Z9	532786.07	6916452.84
A0	532786.07	6916452.84
B0	532786.07	6916452.84
C0	532786.07	6916452.84
D0	532786.07	6916452.84
E0	532786.07	6916452.84
F0	532786.07	6916452.84
G0	532786.07	6916452.84
H0	532786.07	6916452.84
I0	532786.07	6916452.84
J0	532786.07	6916452.84
K0	532786.07	6916452.84
L0	532786.07	6916452.84
M0	532786.07	6916452.84
N0	532786.07	6916452.84
O0	532786.07	6916452.84
P0	532786.07	6916452.84
Q0	532786.07	6916452.84
R0	532786.07	6916452.84
S0	532786.07	6916452.84
T0	532786.07	6916452.84
U0	532786.07	6916452.84
V0	532786.07	6916452.84
W0	532786.07	6916452.84
X0	532786.07	6916452.84
Y0	532786.07	6916452.84
Z0	532786.07	6916452.84

CHANNEL LIMITS - MGA Zone 58 (GDA04)		
POINT	EASTING	NORTHING
H2	534471.12	6918939.21
J2	534731.04	6918957.69
K2	53481.949	6918912.27
L2	53498.898	6918742.56
M2	535169.33	6918554.49
N2	535270.48	6918726.08
O2	535455.18	6918844.97
P2	535629.59	6918542.81
Q2	535733.82	6918608.57
R2	535910.98	6918326.39
S2	536017.70	6918245.94
T2	536214.76	6918074.91
U2	536302.22	6918012.23
V2	536416.72	6918695.45
W2	536509.92	6918911.97
X2	536759.47	6918942.50
Y2	536914.10	6918917.53
Z2	537059.39	6918860.53
A3	537241.08	6918770.02
B3	537363.14	6918864.60
C3	537444.07	6918958.47
D3	537571.37	6918306.13
E3	537629.37	6918511.78
F3	537684.67	6918101.92
G3	537615.75	6917807.58
H3	540360.85	6917479.33
I3	540069.27	6917545.51
J3	539906.15	6917534.97
K3	539858.66	6917528.66
L3	539415.66	6917504.82
M3	539252.20	6917404.13
N3	539189.07	6917460.74
O3	539180.85	6917311.44
P3	539159.55	6917464.47
Q3	539128.98	6917016.76
R3	539096.43	6916918.90
S3	539054.77	6916827.22
T3	538930.67	6916664.04
U3	538851.51	6916664.49
V3	538768.74	6916536.25
W3	538664.60	6916466.45
X3	538589.88	6916447.26
Y3	538472.08	6916416.51
Z3	538371.85	6916400.66
A4	538371.85	6916386.93
B4	538163.35	6916381.63
C4	538061.16	6916386.93
D4	537959.28	6916402.07



CHANNEL LIMITS - MGA Zone 58 (GDA04)		
POINT	EASTING	NORTHING
ES	537685.36	6916429.65
CS	537818.18	6916470.17
FS	537759.88	6916522.41
GS	537690.45	6916609.17
IS	537642.24	6916704.64
JS	537607.24	6916796.86
KS	537583.66	6916886.44
LS	537571.59	6916977.98
MS	537570.89	6917074.58
NS	537611.00	6917073.90
OS	537611.57	6916983.15
PS	537623.11	6916903.43
QS	537623.59	6916950.40
RS	537623.59	6916950.40
SS	537623.59	6916950.40
TS	537623.59	6916950.40
US	537623.59	6916950.40
VS	537623.59	6916950.40
WS	538065.14	6916425.58
XS	538162.79	6916451.69
YS	538267.81	6916428.78
ZS	538365.36	6916443.26
AS	537575.71	6917187.56
BS	537590.60	6918245.96
CS	537535.56	6918377.08
DS	537431.80	6918545.02
ES	537320.20	6918745.01
FS	537044.14	6918974.44
GS	536904.57	6918878.55
HS	536765.51	6918977.72
IS	536505.42	6918912.11
JS	536403.45	6918914.45
KS	536301.81	6918976.64
LS	536200.36	6919016.69
MS	535991.50	6919194.51
NS	535863.60	6919299.88
OS	535769.48	6919394.10
PS	535679.56	6919459.12
QS	535436.81	6919609.11
RS	535271.01	6919714.72
TS	535165.22	6919714.72
US	534973.91	6919703.16
VS	534857.97	6919629.13
WS	534765.10	6919555.25

NAVIGATION AIDS - MGA Zone 58 (GDA04)				
NAV AID	EASTING	NORTHING	ORIGIN	CHECKED
319 (EAST CARDINAL BCN LIT)	540365	6917739	D002-186	-
GREEN BEACON LIT (ON SIGN)	540121	6917619	3/9/2014 RTK	-
312 (GRN BCN LIT)	539888	6917591	B300-08B	3/9/2014 RTK
317 (RED BCN LIT)	539859	6917475	3/4/2013 RTK	REPLACED
11308 (SPECIAL BCN LIT)	539567	6917322	B300-06A	-
1583 (RED BCN LIT)	539216	6917342	3/9/2014 RTK	-
11301 (GRN BCN LIT)	539114	6917249	B300-06B	3/9/2014 RTK
1584 (GRN BCN LIT)	539067	6917036	B300-06B	3/9/2014 RTK
318 (GRN BCN LIT)	538910	6916730	-	REMOVED
314 (GRN BCN LIT)	538810	6916730	B300-06B	3/9/2014 RTK
1586 (RED BUOY LIT)	538610	6916452	B300-06B	3/9/2014 RTK
1585 (GRN BCN LIT)	538388	6916454	3/4/2013 RTK	-
1587 (RED BUOY LIT)	538091	6916375	3/4/2013 RTK	-
474 (GRN BUOY LIT)	537998	6916444	3/9/2014 RTK	-
1594 (RED BUOY LIT)	536119	6916124	B300-06A	15/01/2013 RTK
473 (RED BUOY LIT)	535941	6916001	3/9/2014 RTK	-
3315 (GRN BCN LIT)	535815	6916953	B300-06A	3/9/2014 RTK
1588 (SPECIAL BCN LIT)	537558	6916954	B300-06A	19/12/2012 RTK
1799 (GRN BCN LIT)	537512	6917229	B300-06A	19/12/2012 RTK
1800 (NTH CARD. BCN LIT)	537591	6917401	B300-06A	19/12/2012 RTK
1589 (GRN BCN LIT)	537639	6917574	B300-06B	19/12/2012 RTK
1590 (RED BUOY LIT)	537682	6918238	B300-06A	3/9/2014 RTK
1743 (RED BCN LIT)	537400	6918306	B300-06A	3/9/2014 RTK
3486 (RED BCN LIT)	537062	6918113	B300-067	3/9/2014 RTK
1591 (GRN BCN LIT)	537168			



NOTES:
 1) Contours are computer generated to Hydrographic Standard (inclusive).
 2) Sounding obtained from aerial photography is approximate only.
 3) True magnetic variation is considered zero. Data provided by GDA and MHD.
 4) True magnetic variation up to 29/7/2016.
 5) Hydrographic Survey up to 29/7/2016.
 6) Data trimmed above elevation 14 LAT.

Horizontal Datum	MGA Zone 58 (GDA04)	Shading	None
Vertical Datum	LAT based on	Soundings	2s below datum 2s above datum
Vertical Datum	LAT based on	Horizontal Positioning	CLASS NVA
Depth Technique	N/A	Horizontal Technique	NVA
Weather	N/A	Vertical Reference Station	LEVEL 3 (pg) above datum LEVEL 4 (pg) below datum

SCALE 1 : 2000 AT A1

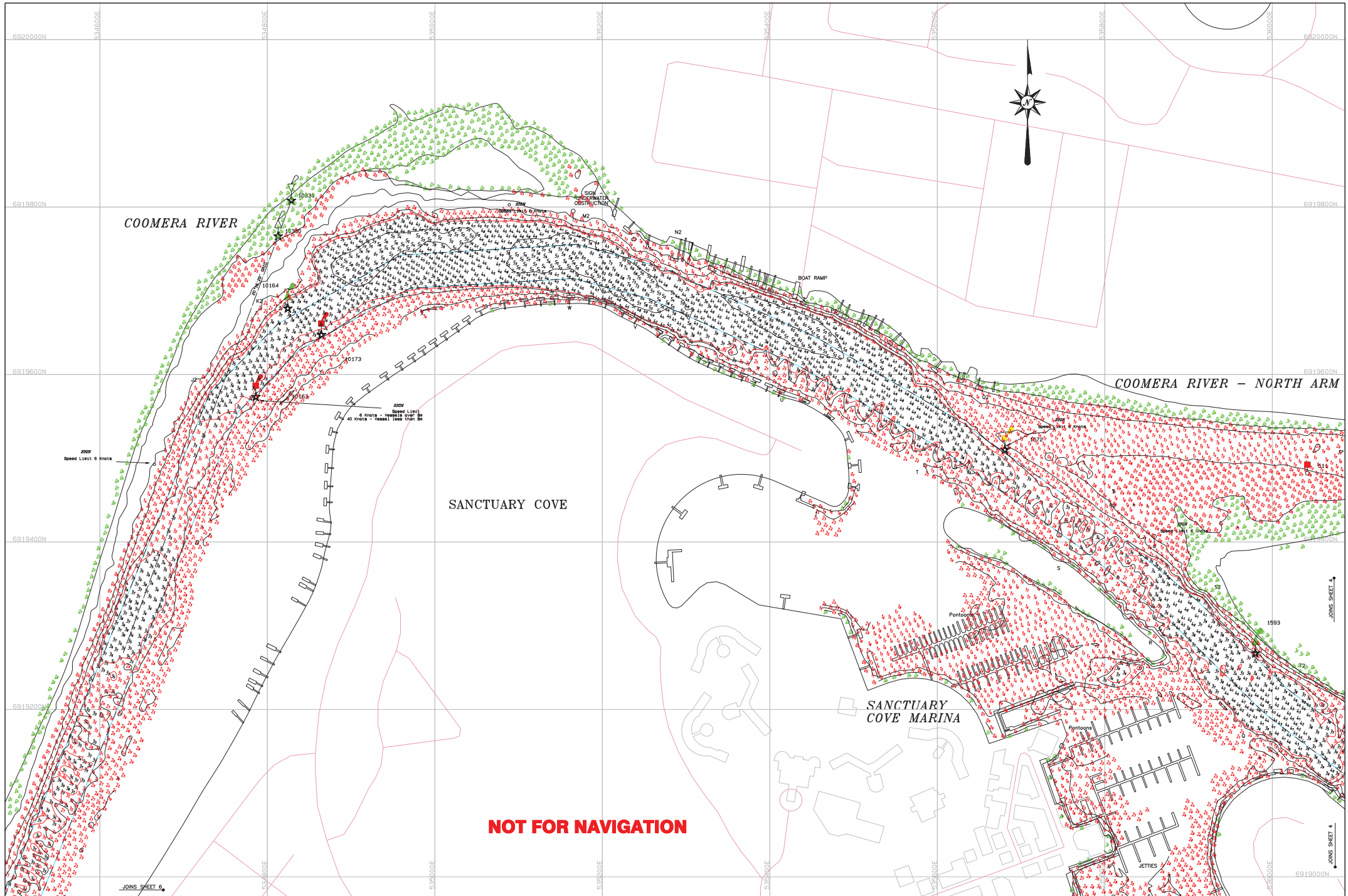
CLASS NVA **CLIENT** GCWA

Operator Queensland Hydrographic Survey
Manager T. R. 150
Contractor D. N. 110
 Owen Campbell
 2016.08.15
 14.08.58 +1000



COOMERA RIVER
 SOVEREIGN ISLAND TO PACIFIC HIGHWAY
 COMPILED HYDROGRAPHIC DATA
 AUGUST 2016
 Copyright The State of Queensland 2016 (Transport and Main Roads)

Plot No. B3000BOP4.PDF
 Job No. GC140051
 File No. **B300-080**
 SHEET 4 OF 9



NOTES:
 1) Contours are computer generated to hydrographic standards (inclusive).
 2) Soundings obtained from aerial photography is approximate only.
 3) From time to time a clearance may be required.
 4) Hydrographic surveys up to 20/10/2016.
 5) Data collected above elevation 14 LAT.
 6) Data trimmed above elevation 14 LAT.

Horizontal Datum	MSA Zone 58 (GDA04)	Meaning	Meaning
Vertical Datum	LAT based on		
Depth Tolerance	N/A	Horizontal Tolerance	N/A
Weather	N/A		

Soundings	2.5	below datum
Meaning	8	above datum
Horizontal Positioning	COMPILED	
Data Collection/Processing		
Tidal Reference Station		

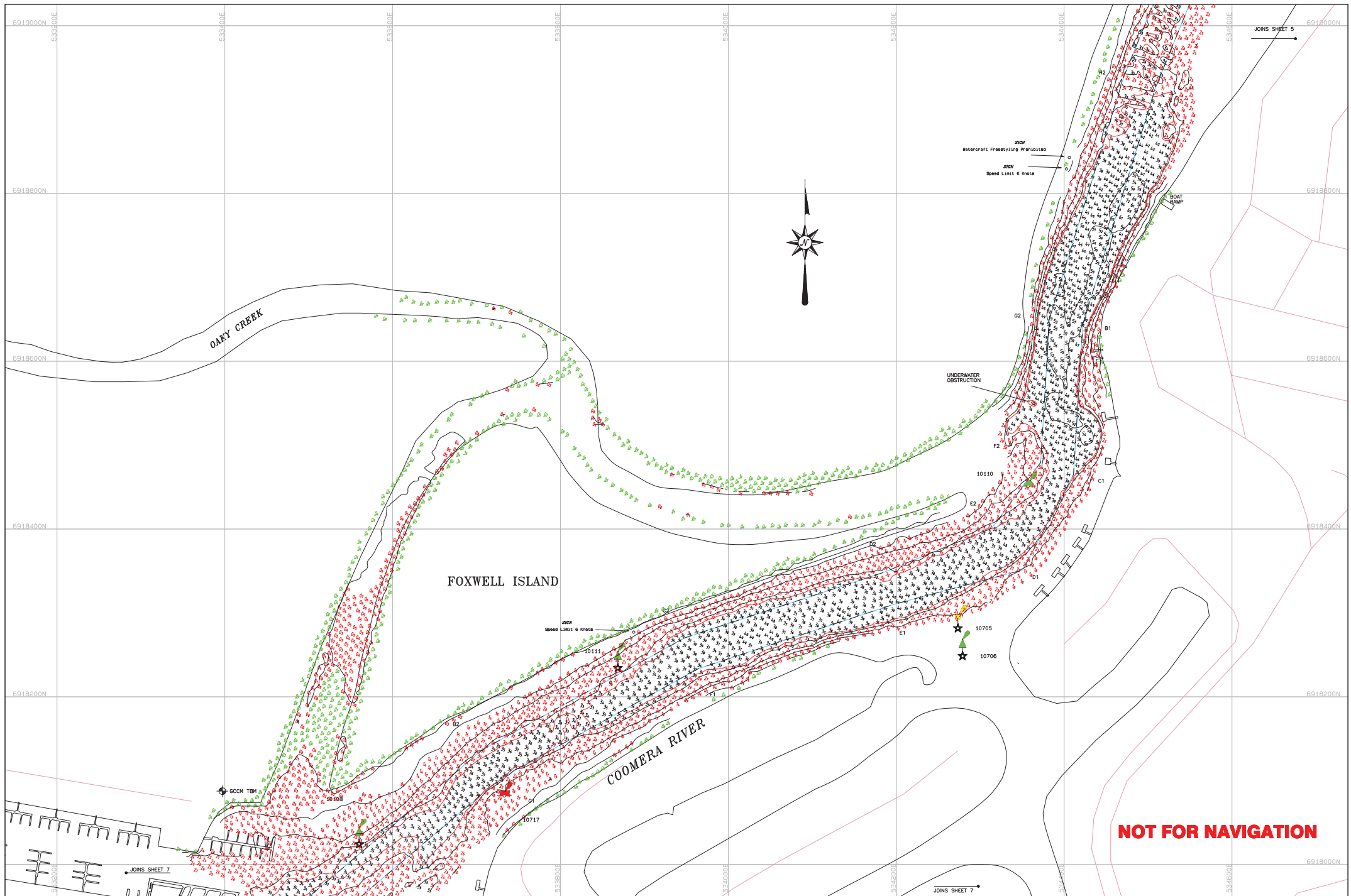
CLASS	NVA	CLIENT	GCWA
Scale	0 20 100 200	Scale	SCALE 1 : 2000 AT A1
Signature	David Campbell	Date	2016.08.15
Hydrographic Surveyor	David Campbell	Client	GCWA
Manager	T. R. 150		
Checked	D. 1119		
	2016.08.15		
	140932 +1000		

Queensland Government
HYDROGRAPHIC SERVICES
 170 Water Street
 Brisbane QLD 4000
 Phone: (07) 3000 8000
 Fax: (07) 3000 8001
 Email: hydro@qld.gov.au

COOMERA RIVER
SOVEREIGN ISLAND TO PACIFIC HIGHWAY
COMPILED HYDROGRAPHIC DATA
AUGUST 2016

Plot No. B3000BOPS.PDF
 Job No. GC140051
 File No. **B300-080**
 SHEET 5 OF 9

Copyright The State of Queensland 2016 (Transport and Main Roads)



NOTES:
 1) Contours are computer generated to Hydrographic Standard (inclusive).
 2) Sounding obtained from aerial photography is approximate only.
 3) From time to time the clearance depth is updated. Data provided by GCSM and MSD.
 4) From time to time the clearance depth is updated. Data provided by GCSM and MSD.
 5) Hydrographic surveys up to 20/11/2015.
 6) Data trimmed above elevation 14 LAT.

Horizontal Datum	MGA Zone 58 (GDA04)	Reading	Heading
Name Datum	LAT based on	Vertical Datum	
Depth Tachometer	N/A	Horizontal Tachometer	N/A
Weather	N/A		

Year	2016
Date of Survey	2016
Horizontal Positioning	DGPS
Date Collection/Processing	2016/08/15
Tidal Reference Station	

Scale	SCALE 1 : 1000 AT A1
Operator	Hydrographic Services
Manager	T. R. 198
Checked	D. 1112
Drawn	Gwen Campbell
Date	2016/08/15
Project No.	141551-11000

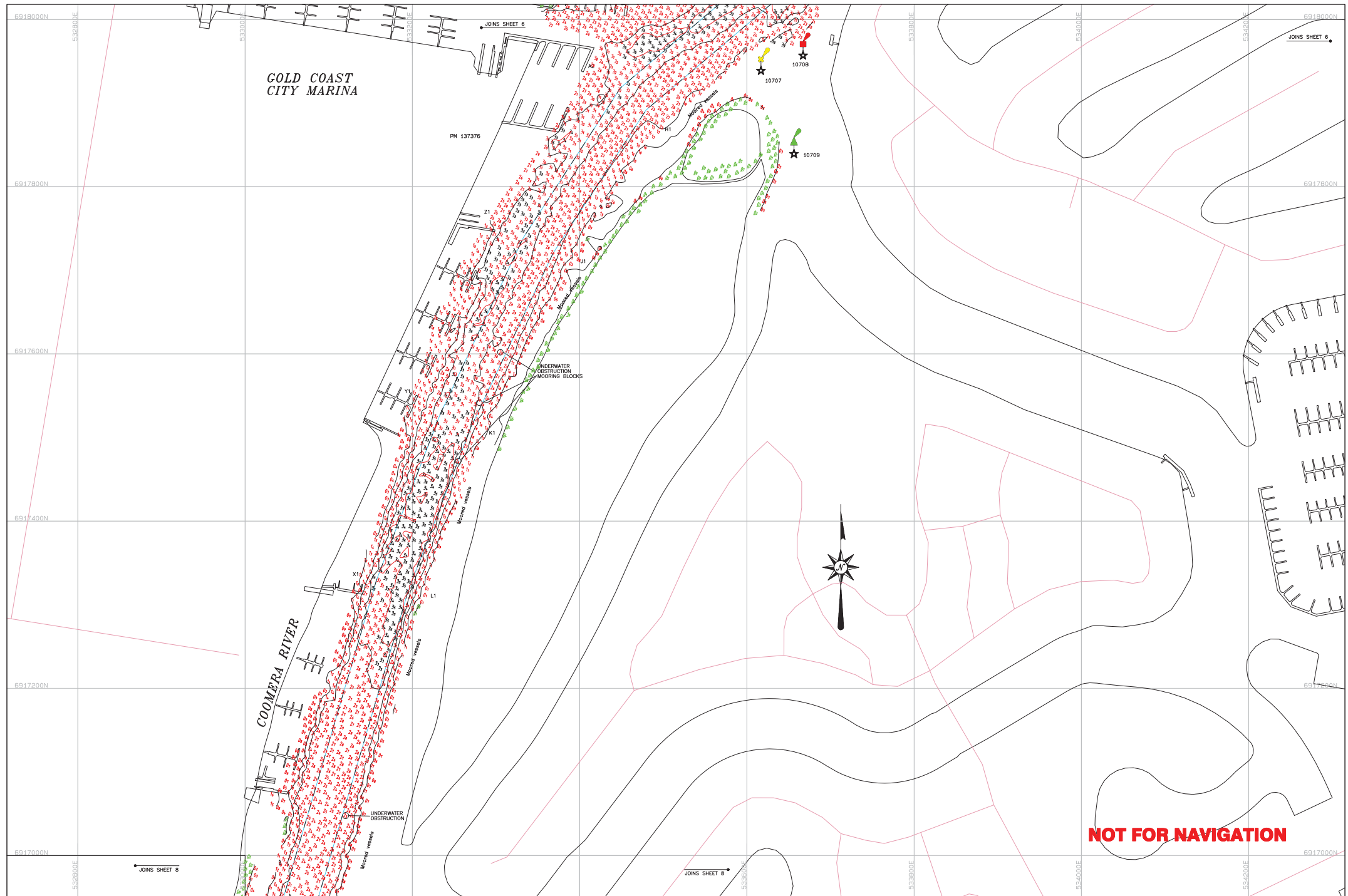
Queensland Government

HYDROGRAPHIC SERVICES

Hydrographic Services
141551-11000

COOMERA RIVER
SOVEREIGN ISLAND TO PACIFIC HIGHWAY
COMPILED HYDROGRAPHIC DATA
AUGUST 2016

Plot No. B3000BOP6.PDF
 Job No. GC140051
 File No. **B300-080**
 SHEET 6 OF 9



NOTES:
 1) Contours are computer generated to Hydrographic Standard (inclusive).
 2) Sounding obtained from aerial photography is approximate only.
 3) Contours are shown to a clearance depth. Data provided by OCA and MSD.
 4) Contours are shown to a clearance depth. Data provided by OCA and MSD.
 5) Hydrographic surveys up to 20/11/2015.
 6) All soundings are with the LAT. Data. This plan must not be used for navigation purposes.
 7) Data trimmed above elevation 14 LAT.

Horizontal Datum	MGA Zone 58 (GDA04)	Meaning	Meaning
Name Datum			
Vertical Datum	LAT based on		
Title Name			
Depth Tolerance	N/A	Horizontal Tolerance	N/A
Weather	N/A		

Soundings (m)	0 20 100 200
Scale	SCALE 1 : 2000 AT A1
CLASS	N/A
CLIENT	GCWA

Operator	Hydrographic Services
Manager	T. R. 150
Checked	D. 1111
Date	2016.08.15
Scale	1:41626 +1000

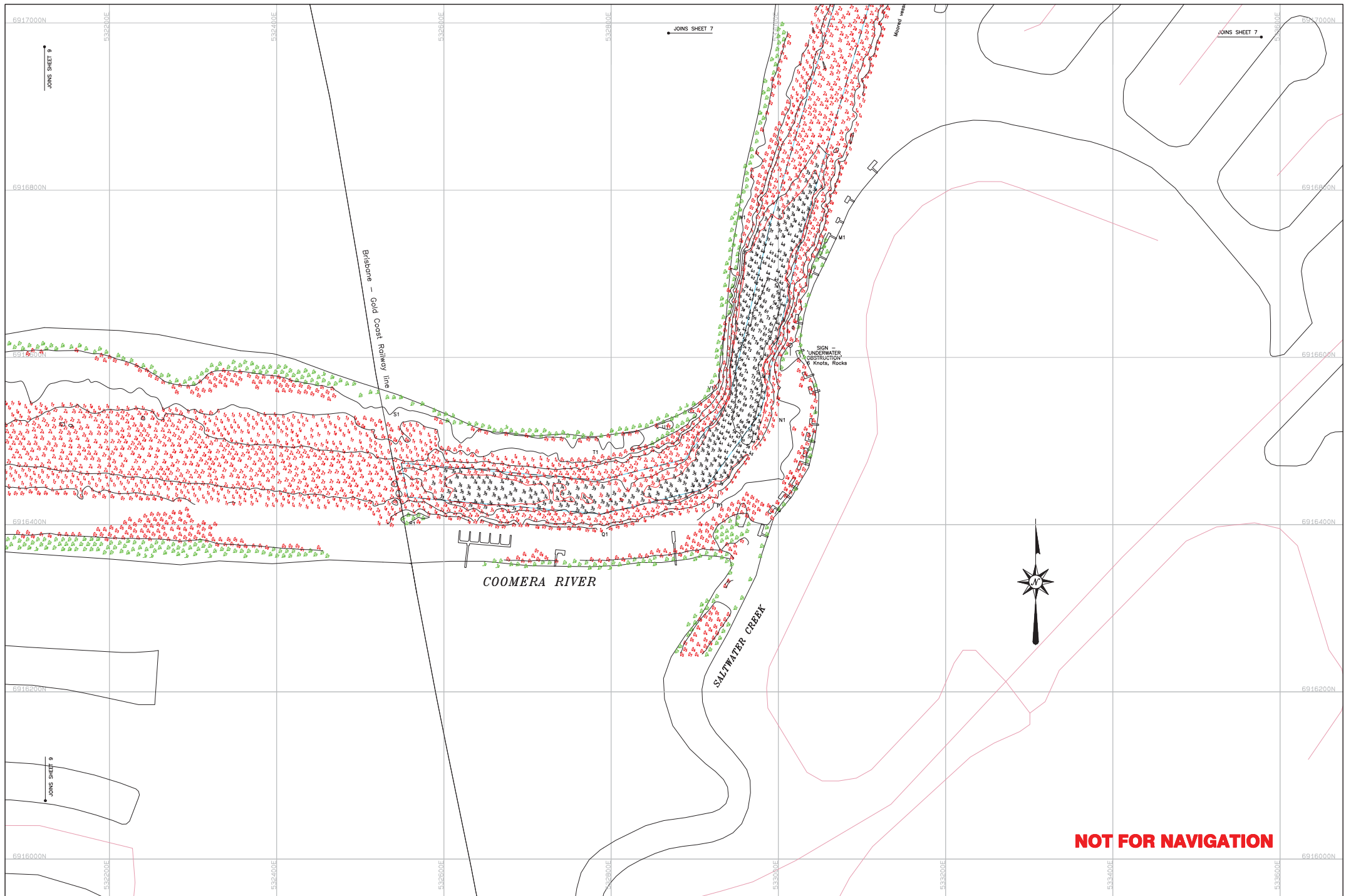


COOMERA RIVER
 SOVEREIGN ISLAND TO PACIFIC HIGHWAY
 COMPILED HYDROGRAPHIC DATA
 AUGUST 2016

NOT FOR NAVIGATION

Plot No. B3000BOP7.PDF
 Job No. GC140051
 File No. **B300-080**
 SHEET 7 OF 9

Copyright The State of Queensland 2016 (Transport and Main Roads)



NOT FOR NAVIGATION

NOTES:
 1) Contours are computer generated to hydrographic standards (inclusive).
 2) Sounding obtained from aerial photography is approximate only.
 3) From time to time a clearance depth is provided by GCSA and MSP.
 4) This chart is to be used in conjunction with the Hydrographic Survey up to 20/11/2015.
 5) All soundings are in metres above datum.
 6) Data trimmed above elevation 14 LAT.

Horizontal Datum	MGA Zone 58 (GDA04)	Meaning	Meaning
Name Datum		Vertical Datum	LAT based on
Vertical Datum		CLASS	CLIENT
Depth Measurement	N/A	Horizontal Measurement	N/A
Weather	N/A	Weather	N/A

Scale	0 20 100 200
Scale 1 : 2000 AT A1	
CLASS	NVA
CLIENT	GCWA

Queensland Government
 Hydrographic Services
 Director of Marine Services

COOMERA RIVER
 SOVEREIGN ISLAND TO PACIFIC HIGHWAY
 COMPILED HYDROGRAPHIC DATA
 AUGUST 2016
Copyright The State of Queensland 2016 (Transport and Main Roads)

Plot No. B3000BOPB.PDF
 Job No. GC140051
 File No. **B300-080**
 SHEET 8 OF 9



NOTES:
 1) Contours are computer generated to Hydrographic Standard (inclusive).
 2) Sounding obtained from aerial photography is approximate only.
 3) The chart is subject to clearance depth. Chart data provided by GCSA and HDG.
 4) This chart is not to be used for navigation purposes.
 5) Hydrographic Survey up to 29/7/2016 data. This plan must not be used for navigation purposes.
 6) All soundings are with the LAT datum. This plan must not be used for navigation purposes.
 7) Data trimmed above elevation 14 LAT.

Horizontal Datum	MGA Zone 58 (GDA04)	Reading	Reading
Name Datum	LAT based on		
Vertical Datum	LAT based on		
Title Name	LAT based on		
Depth Reference	N/A	Horizontal Reference	N/A
Weather	N/A		

Year	2016
Scale	1:2000
Horizontal Positioning	GPS
Date Collection/Processing	2016/08/15
Tidal Reference Station	

CLASS NVA **CLIENT** GCWA

SCALE 1 : 2000 AT A1

0 20 100 200

Operator	Hydrographic Services
Manager	T. R. 150
Client	D. 1119
Project	Coomera River



COOMERA RIVER
 SOVEREIGN ISLAND TO PACIFIC HIGHWAY
 COMPILED HYDROGRAPHIC DATA
 AUGUST 2016

NOT FOR NAVIGATION

Plot No. B3000BOP9_PDF
 Job No. GC140051
 File No. **B300-080**
 SHEET 9 OF 9