



PROJECT FACT SHEET

# Coomera River Channel dredging project

The Gold Coast Waterways Authority is improving access and connections to the waterways by dredging the Coomera River navigation channel from Sovereign Island to the Gold Coast Marine Industry Precinct at Coomera. Approximately 70,000 cubic metres of sand will be removed and beneficially reused.

## BENEFITS

- Reinstate the approved channel depth.
- Improved access and safety through the removal of shoaling.
- Easier access to Gold Coast Marine Industry Precinct and residential developments.
- Reused sand will aid sand nourishment at northern Gold Coast beaches.

## IMPACTS

- A trailer hopper dredge and cutter suction dredge will operate in the channel which may restrict vessel access during the works.
- The trailer hopper dredge will be regularly transporting dredge material from the downstream section of the Coomera River through the Seaway to the Narrowneck placement area.
- The dredge will display day shapes to indicate the passing side and will be contactable via VHF radio. Masters should reduce speeds and navigate with care.
- Water quality monitoring buoys will be installed adjacent to the navigation channel for the duration of the works.
- A cutter suction dredge will be transferring dredged material to the Coomera River Dredged Sediment Management Facility (CDSMF) from the midstream section of the Coomera River.

## PROJECT LOCATION

Coomera River, Queensland.

## KEY DETAILS

**Planned investment:**  
\$2,500,000

**Est. dredging start:**  
April 2023

**Est. dredging completion:**  
June 2023

**Current status:**  
Construction phase

## CONTACT

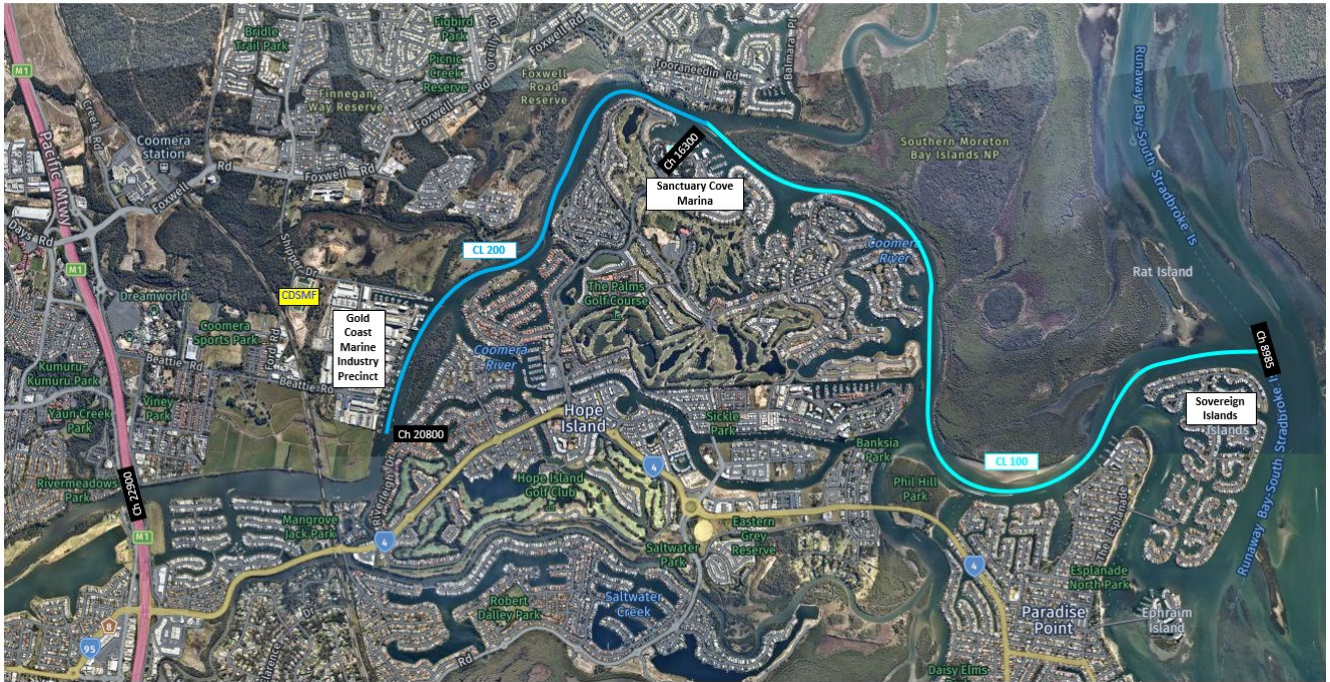
Gold Coast Waterways Authority

07 5539 7350

mail@gcwa.qld.gov.au

# Dredge area and deposition site

COOMERA RIVER DREDGING  
COOMERA RIVER LAYOUT



COOMERA RIVER DREDGING  
NARROWNECK DEPOSITION AREAS

